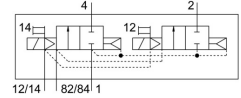
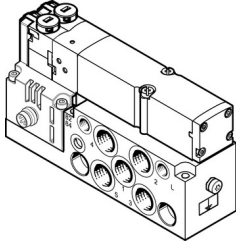


# Air solenoid valve VMPA2-M1H-D-S-G1/8-PI

FESTO

Part number: 537980



## Data sheet

| Feature                                    | Value                                        |
|--------------------------------------------|----------------------------------------------|
| Valve function                             | 2x2/2 closed, monostable                     |
| Actuation type                             | Electrical                                   |
| Valve size                                 | 20 mm                                        |
| Standard nominal flow rate                 | 650 l/min                                    |
| Pneumatic working port                     | G1/8                                         |
| Operating voltage                          | 24V DC                                       |
| Operating pressure                         | 0.3 MPa ... 1 MPa                            |
| Operating pressure                         | 3 bar ... 10 bar                             |
| Structural design                          | Piston gate valve                            |
| Reset method                               | Pneumatic spring                             |
| Certification                              | c UL us - Recognized (OL)                    |
| CE marking (see declaration of conformity) | As per EU EMC directive                      |
| Degree of protection                       | IP65<br>In mounted state<br>as per IEC 60529 |
| Type code                                  | VMPA2                                        |
| Exhaust air function                       | With flow control option                     |
| Sealing principle                          | Soft                                         |
| Mounting position                          | Any                                          |
| Manual override                            | Detenting<br>Non-detenting                   |
| Type of control                            | Pilot-controlled                             |
| Pilot air supply port                      | External                                     |
| Flow direction                             | Non-reversible                               |
| Symbol                                     | 00991803                                     |
| Lap                                        | Overlap                                      |
| Signal status display                      | yes                                          |
| Pilot pressure MPa                         | 0.3 MPa ... 0.8 MPa                          |
| Pilot pressure                             | 3 bar ... 8 bar                              |
| Suitability for vacuum                     | no                                           |
| Standard nominal flow rate with QS-8       | 650 l/min                                    |
| Switching time off                         | 25 ms                                        |
| On switching time                          | 7 ms                                         |
| Max. positive test pulse with 0 signal     | 400 µs                                       |
| Max. negative test pulse on 1 signal       | 900 µs                                       |
| Permissible voltage fluctuations           | +/- 25 %                                     |

| Feature                                   | Value                                                                                |
|-------------------------------------------|--------------------------------------------------------------------------------------|
| Operating medium                          | Compressed air as per ISO 8573-1:2010 [7:4:4]                                        |
| Information on operating and pilot media  | Operation with oil lubrication possible (required for further use)                   |
| Vibration resistance                      | Transport application test with severity level 2 as per FN 942017-4 and EN 60068-2-6 |
| Shock resistance                          | Shock test with severity level 2 as per FN 942017-5 and EN 60068-2-27                |
| Corrosion resistance class (CRC)          | 1 - Low corrosion stress                                                             |
| Storage temperature                       | -20 °C ... 40 °C                                                                     |
| Temperature of medium                     | -5 °C ... 50 °C                                                                      |
| Relative air humidity                     | Max. 90 % at 40 °C                                                                   |
| Ambient temperature                       | -5 °C ... 50 °C                                                                      |
| Max. tightening torque for valve mounting | 0.65 Nm                                                                              |
| Product weight                            | 325 g                                                                                |
| Electrical connection                     | 4-pin<br>M8x1<br>Plug<br>as per EN 60947-5-2                                         |
| Type of mounting                          | With through-hole                                                                    |
| Pilot air port 12/14                      | M5                                                                                   |
| Pilot exhaust air port 82/84              | M5                                                                                   |
| Pneumatic connection 1                    | G1/8                                                                                 |
| Pneumatic connection 2                    | G1/8                                                                                 |
| Pneumatic connection 3                    | G1/8                                                                                 |
| Pneumatic connection 4                    | G1/8                                                                                 |
| Pneumatic connection 5                    | G1/8                                                                                 |
| Note on materials                         | RoHS-compliant                                                                       |
| Seals material                            | NBR                                                                                  |
| Housing material                          | Die-cast aluminum                                                                    |